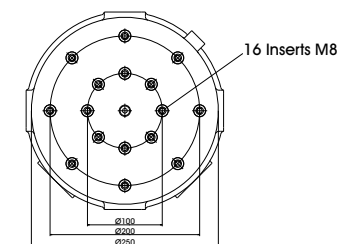
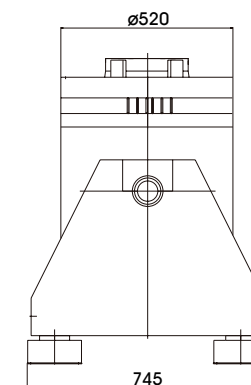
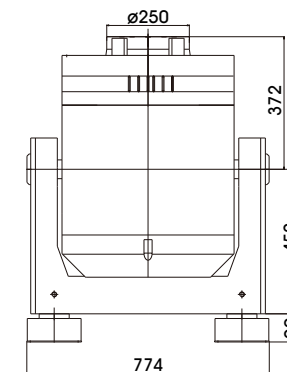


TECHNICAL PARAMETERS Vibration exciter S 56263/LSS-250

Rated peak force Sine _{pk} /Random _{RMS} /Shock _{pk} ¹	6300/4300/15750 N
Frequency range	1-2000 Hz
Main resonance frequency	>2000 Hz
Max. displacement Peak-Peak ²	100 mm
Max. velocity Sine/Random/Shock	2.0/2.0/4.5 m/s
Max. acceleration Sine/Random/Shock ¹	54/34/107 g
Suspension stiffness	electronically adjustable
Effective moving mass	13.0 kg
Max. weight tested	50 kg
Weight	850 kg
Magn. stray field Std./low degaussing	<1.5/<0.8 mT
Armature diameter	250 mm
Interlocks	Temperature, displacement, cooling air, overcurrent

1) theoretical maximum shock value. Depends on payload, amplifier, shock and shock width
2) only with foundation mounting



SCOPE OF DELIVERY, OPTIONS AND FEATURES OF THE SYSTEM

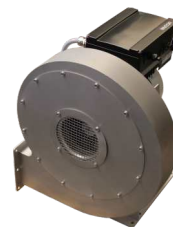
<p>Scope of delivery: Vibration exciter 6.3 kN Trunnion mount Power amplifier 15 kVA Cooling blower Connection cables (each 5 m) Power cables (5 m) for amplifier (CEE 32 connector) Blower hose ø140 mm (5 m)</p>	<p>Options: Different hole pattern of armature (different pitch diameter and/or thread inserts) at customers request Low degaussing kit to further reduce stray magnetic field Wheels&Rails (incl. 3m rails) Squeak&Rattle (Silent operation without blower) Thermobarrier Chamber leadthrough Climatic chamber support kit Remote control (Software) Silencer for cooling blower (Noise reduction 3 - 6 dB(A)) Acoustic enclosure for cooling blower (Noise reduction 5 - 23 dB(A)) Cable extension Factory acceptance test</p>	<p>Features: Vibration isolation < 6 Hz Coarse filter unit Fully automatic electronic load compensation Electronic zero point regulation with adjustable stiffness Automatic centering of the armature Degauss kit to reduce stray magnetic field Integrated mains switch and line filter Integrated field power supply Noise-button Input voltage analyzer Voltage clipping limiter to avoid clipping 3 Sigma Peak current Made in Germany Servicehotline</p>
---	---	--

TECHNICAL PARAMETERS Amplifier A 1 02 3 023 T

Output power _{RMS}	15000 VA
Frequency range	DC - 4 kHz
Voltage _{RMS} , max.	150 V
Current _{RMS} , max.	150 A
Signal input voltage _{RMS} (switchable)	2.5/5/10 V
Distortion	< 0.7 %
Signal to noise ratio	> 90 dB
Field voltage, max.	280 V
Field current, max.	6 A
Weight	330 kg
Dimensions (WxHxD)	600 x 1800 x 800 mm
Power supply (Standard)	3~ / N / PE 400 V±5% 50 Hz, CEE 32
Recommended fuse protection (Standard)	32 A slow
Max. power consumption at 400 V (incl. blower)	14.6 kVA
Interlocks:	Overload, temperature, clipping and more
Features:	
High Signal to noise ratio of >90 dB	Noise-button
Field supply integrated	Input voltage analyzer
Mains switch and integrated line filter	Voltage clipping limiter to avoid clipping
ESD-monitoring	3 Sigma peak current
(Protection of the system against damage)	Electronic zero-point-regulation (TMC)
Field voltage/Field current variable according to customer spec.	

TECHNICAL PARAMETERS Cooling blower TB 9 FUK

Max. volume flow rate	1080 m³/h
Total pressure difference	9 kPa
Motor output	4 kW
Max. frequency	90 Hz
Hose diameter	140 mm
Hose length (Std.)	5 m
Weight	60 kg
Dimensions (WxHxD)	505 x 598 x 464 mm
Max. sound pressure level	99 dB(A)
Power supply (standard)	by amplifier rack
Max. power consumption at 400 V	5.5 kVA
Options:	
Silencer TB 9-SI (Noise reduction 3-6 dB(A))	Dimensions (LxD): 1012 x 150 mm
	Weight: 1.2 kg
Acoustic enclosure TB 9-AE (Noise reduction 5 - 23 dB(A))	Dimensions (WxHxD): 1094 x 1086 x 1000 mm
	Weight: 134 kg
Hose length according to customers request (up to 10 m)	



Cooling blower TB 9 FUK



Silencer TB 9-SI (optional)



Acoustic enclosure TB 9-AE (optional)